

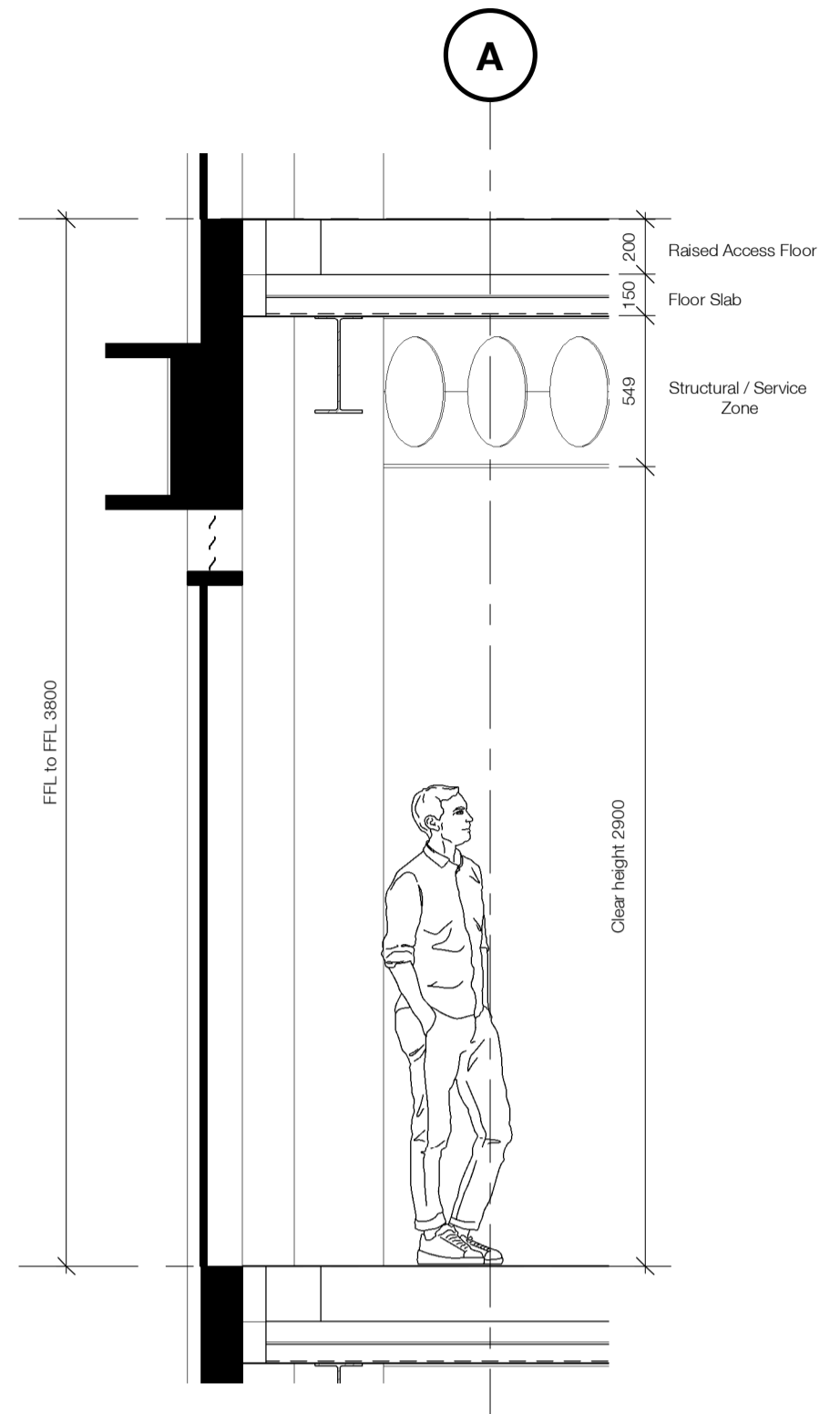
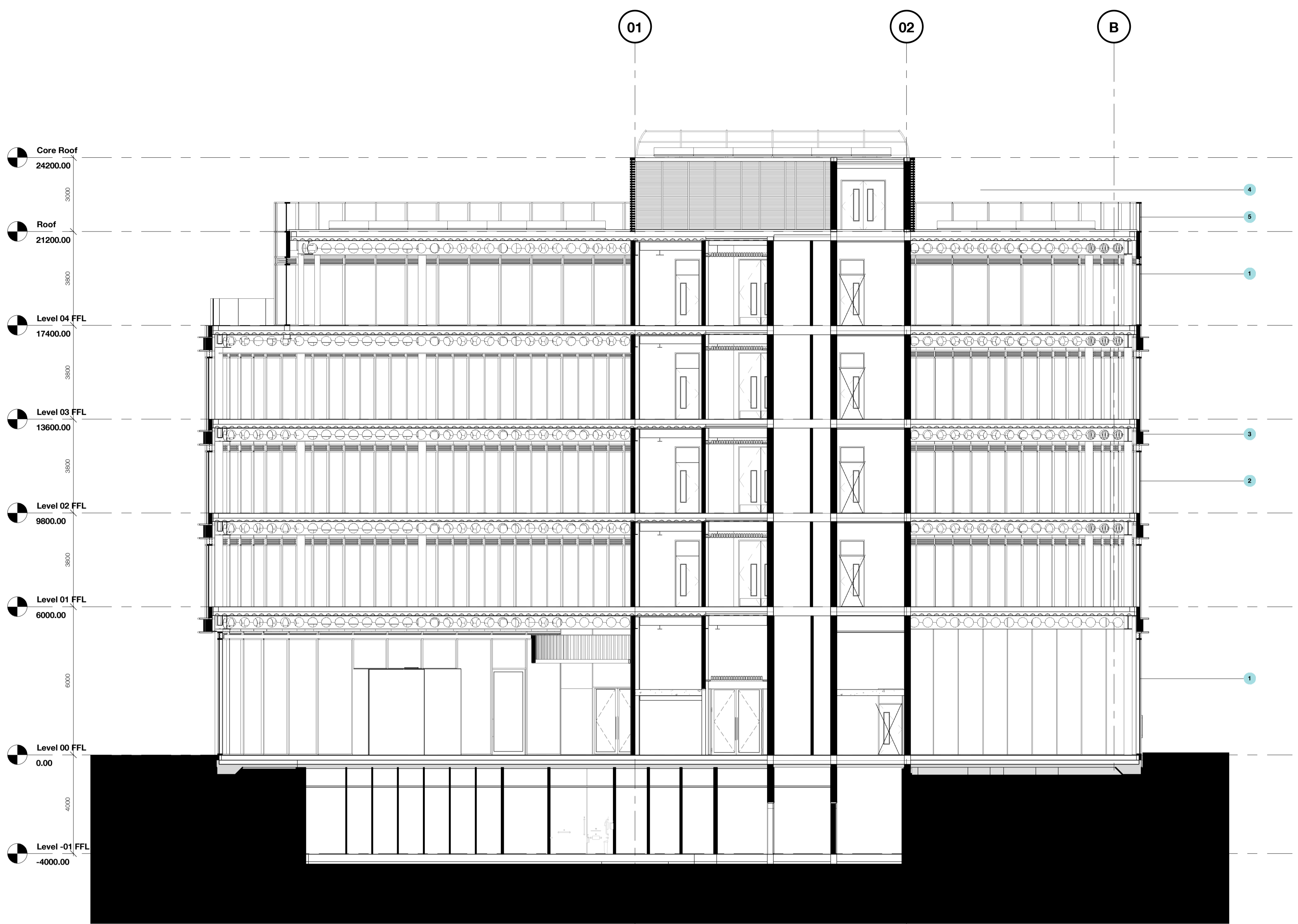
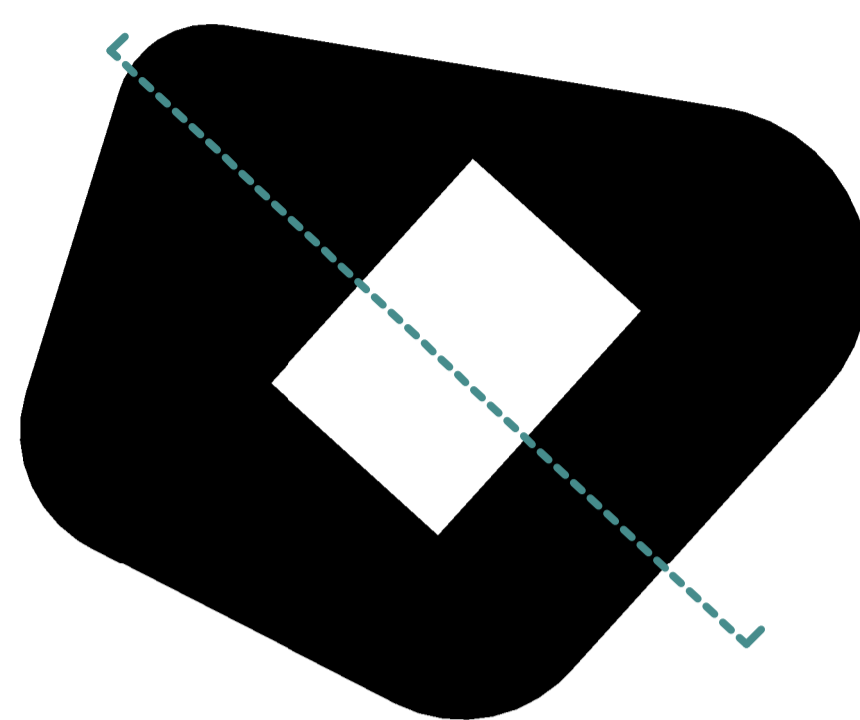
The use of this data by the recipient acts as an agreement of the following statements:  
Do not use this data if you do not agree with any of the following statements:-

Ryder Architecture has co-ordinated relevant information received from third parties, but are not responsible for the content of the information received from others.

The controlled version of this drawing should be viewed in DWG or PDF format not DWG or other formats. All prints of this drawing must be made in full colour.

Where this drawing has been based upon Ordnance Survey data, it has been reproduced under the terms of Ryder Licence No. 100000144. Reproduction of this drawing in whole or in part is prohibited without the prior permission of Ordnance Survey.

Do not scale the drawing. Use figured dimensions in all cases. Check all dimensions on site. Report any discrepancies in writing to Ryder before proceeding.

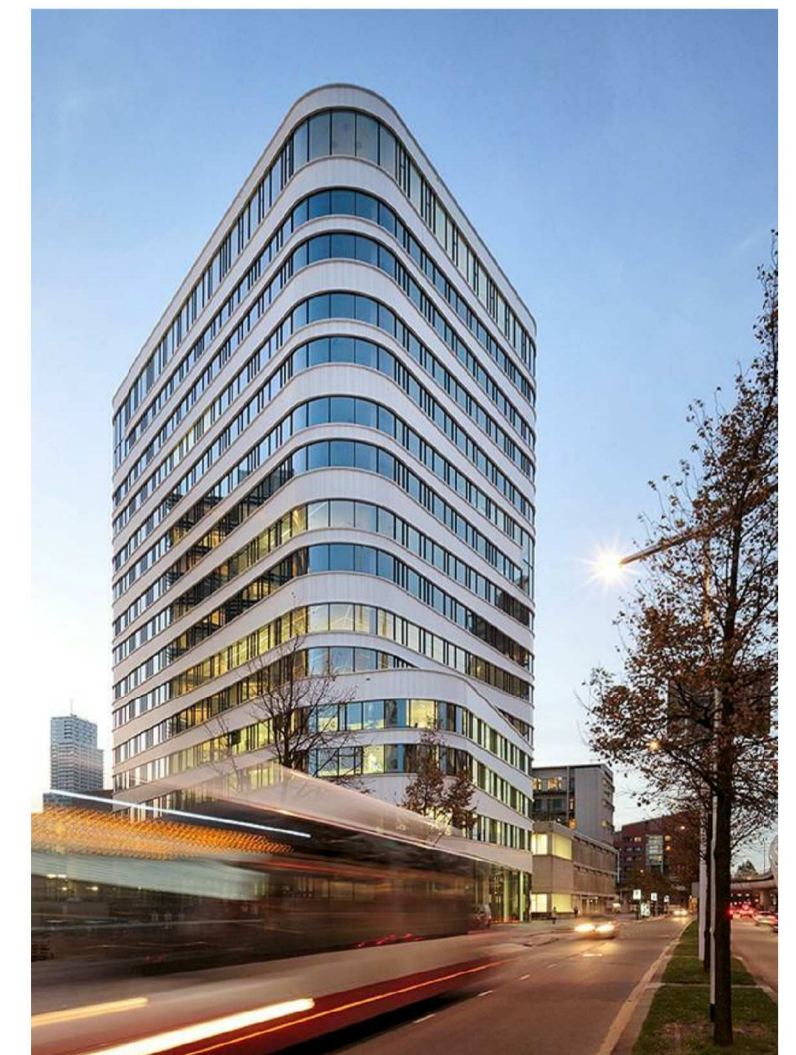
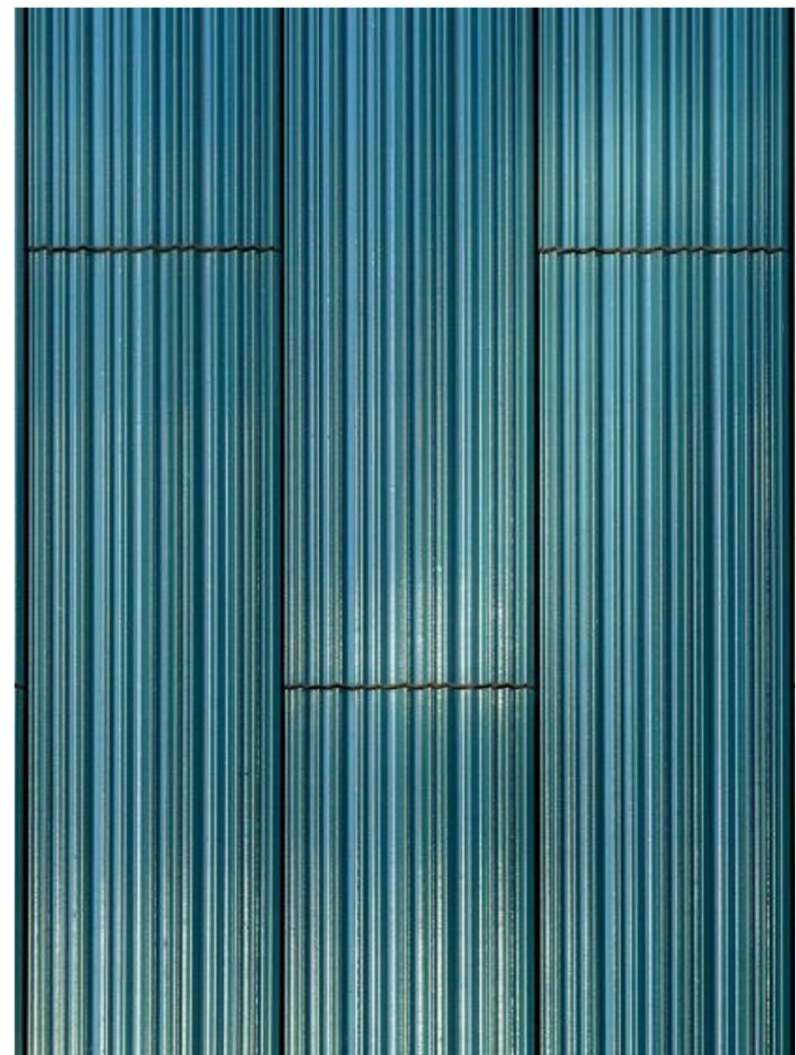
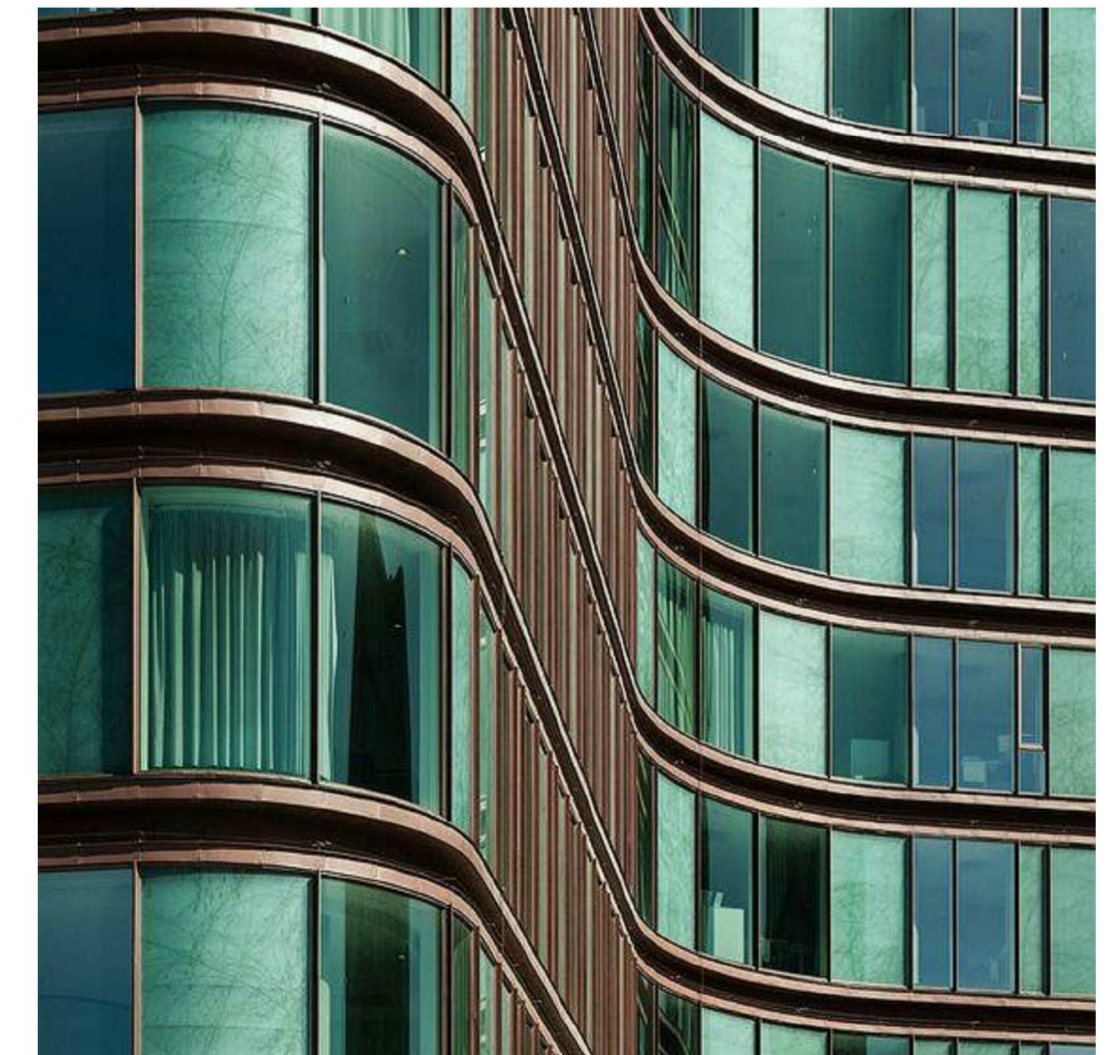


2 Section Call out  
1:25

- 1 Aluminium capless full height curtain walling thermally broken system with toughened triple glazed units with integral 3,000mm glazed doors and curved glass to key corners. Colour TBC from Syltha Pulvin Anodite range. All glazing to have flush appearance, with insulated, lookalike ceramic backed applied to the third face of the unit, complete with all associated and matching accessories and trims.
  - 2 Capped aluminium curtain walling system with glazed look-a-like panels and curved glass to key corners. Glazed louvres as required by MEP engineer. Colour TBC from Syltha Pulvin Anodite range.
  - 3 Feature Rainscreen cladding to be NBK Terracotta panels - NBK TERPART Ventilated Terracotta glazed rainscreen system. Shape, Colour and Profile TBC. Backing wall to be SFS with sheathing and breather member or composite system.
  - 4 Aluminium louvred panels and door to plant areas to be polyester powder coated in Anodite/Alesta finish.
  - 5 Frameless glass balustrade to balconies and terraces.
  - 6 Main entrance doors to be BOOM EDAM fully glazed Crystal Toumket doors with integrated matwell. Door to 3,000mm high. Adjacent pass doors to be outward opening fully glazed power assisted doors operated by PIR with fob access externally and internal release for out of hours use. Manual override linked to fire alarm with fail safe.
- See Outline Specification for more information.

**NOTE:** Structure subject to further design coordination

1 Section 1  
1:100



Rev	Description	Drawn	Checked	Date
P5	Stage 3 issue	FRA	JSE	19/11/20
P4	General update following DTMO3	FRA	JSE	11/11/20
P3	Update following DTMO1	FRA	JSE	09/10/20
P2	General update following client engagement	FRA	JSE	02/10/20
P1	First Issue	FRA	JSE	18/09/20

**Submittal Information**  
Project: Muse, Harton Quays, South Shields  
Drawing: GA Section 01

Project ID	Originator	Zone	Level	Type	Role	Number
HTQ	- RYD	- 00	- ZZ	- DR	- A	- 3800

Project Number	Scale at A1	Status	Revision
10254-00	As indicated	S2	P5

info@ryderarchitecture.com  
www.ryderarchitecture.com

Ryder